

# Envelope Pattern for Pop-up Cards

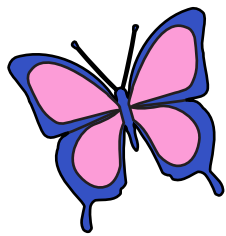
Craft project: <http://www.auntannie.com/MothersDay/Popup>

Top



## How to:

- Cut out envelope
- Fold side flaps in
- Apply glue on bottom flap
- Fold bottom flap
- Color envelope
- Insert card
- Fold top flap over and seal



Bottom

