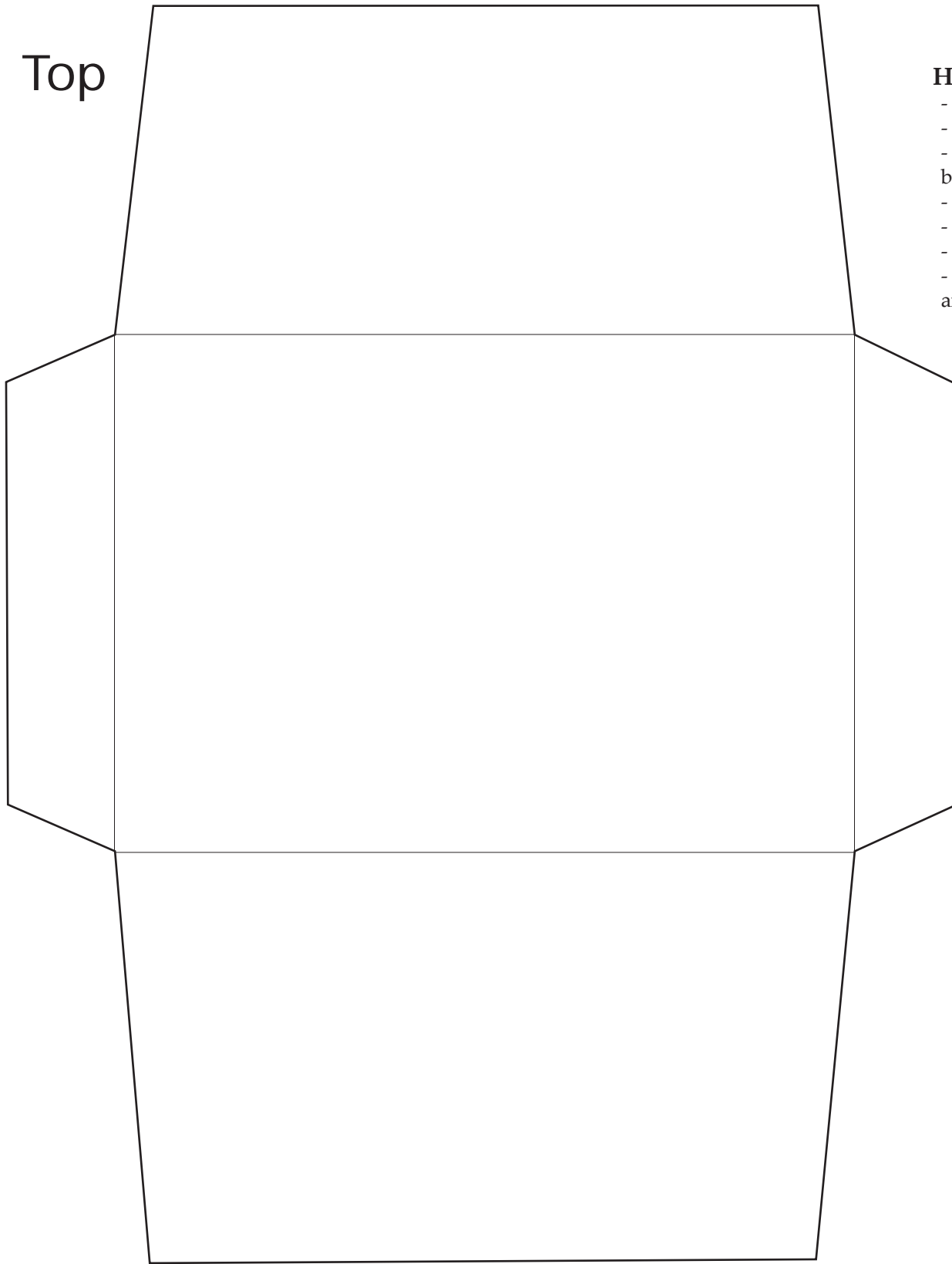


Pattern for 5" by 3½" Envelope with Square Flaps

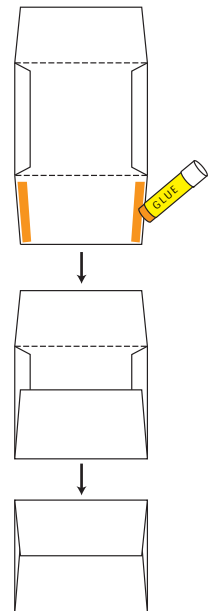
How to Make: <http://www.auntannie.com/Stationery/EnvelopeSqFlap>

Top



How to:

- Cut out envelope
- Fold side flaps in
- Apply glue on bottom flap
- Fold bottom flap
- Color envelope
- Insert card
- Fold top flap over and seal



Bottom