

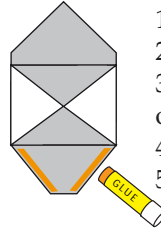
# Pattern for Pop-up Card Envelope

How to Make: <https://www.auntannie.com/Stationery/Envelope/>

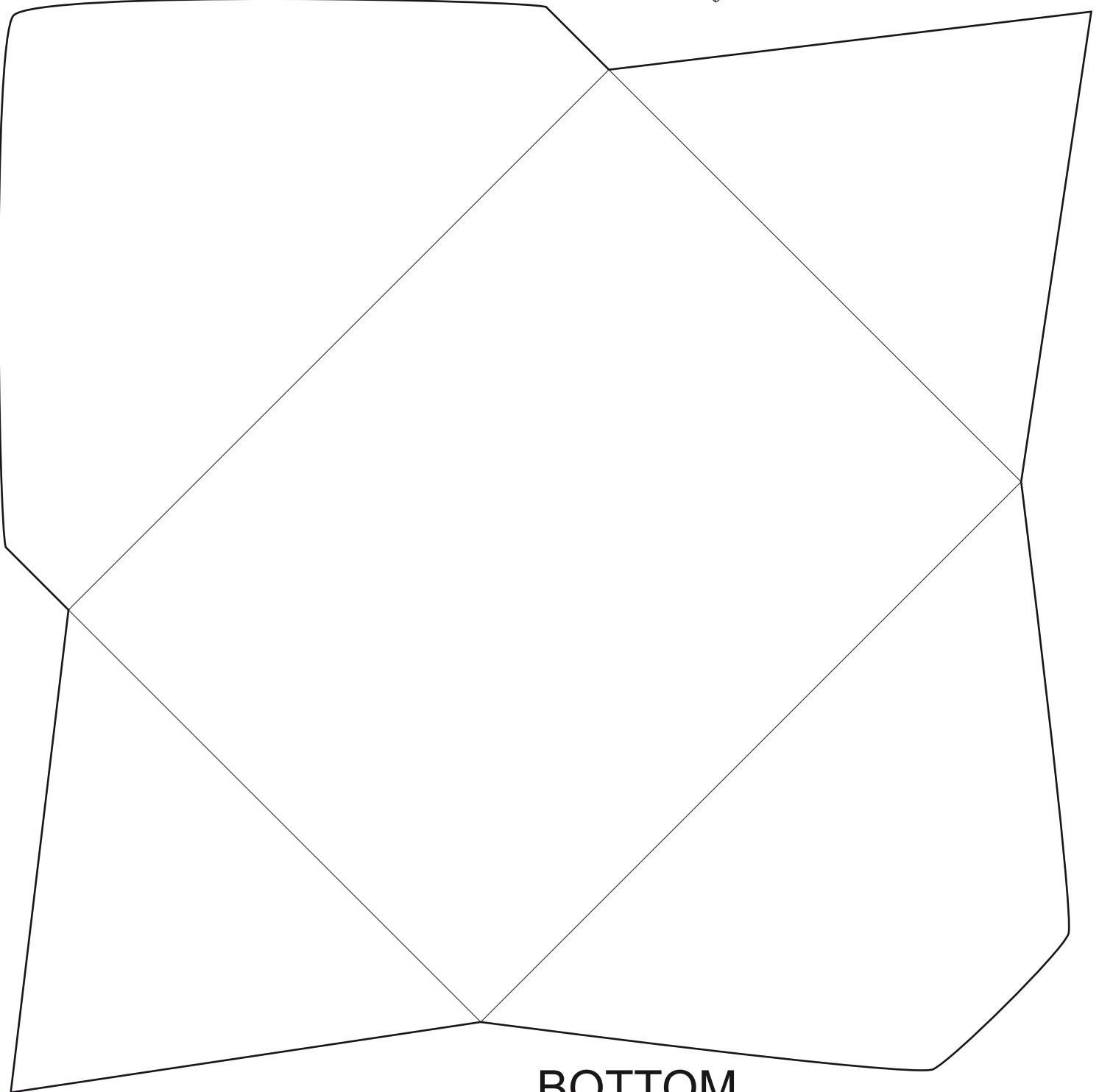
## Envelope Type: A2 Slim Note Card

### Assembly Guide

1. Cut out envelope on dark outline
2. Fold side flaps inward on the thin lines
3. Apply glue on the bottom flap where it overlaps the side flaps
4. Fold bottom flap up and press to adhere
5. Fold top flap down to close



TOP



BOTTOM